

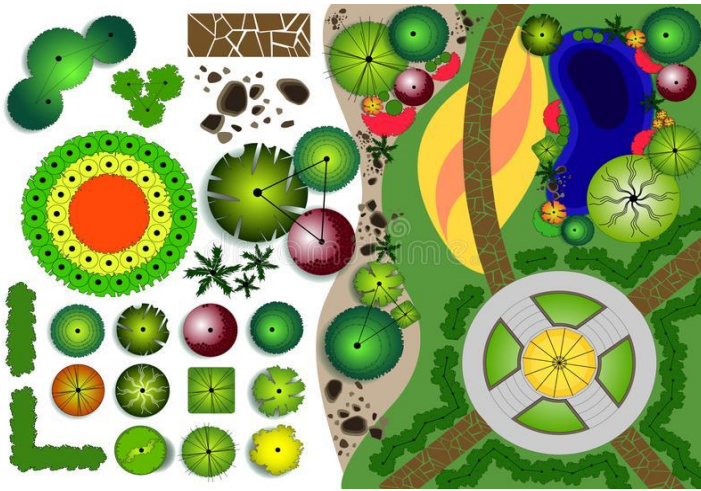
**You are a Landscape Gardener and you have been asked to design a garden.**

**Your garden is an 11m x 16 rectangle.**



**You need to choose what to put in your garden from this list:**

<b>Item</b>	<b>Cost</b>	<b>Key</b>
Grass	£1.50 per square metre	
Vegetable patch	Compost is £2 per square metre Seeds are 75p per square metre	
Paving slabs	£3.50 each (size =1m square)	
Fruit tree	Small - £30 each Large - £65 each	
Pond	£20 per square metre (fish £2 each & lilies £1 each)	
Flowers	£6 bag of 25 bulbs	
Shed	£150 3m x 2 m £215 4m x 3 m	
Greenhouse	£170 3m x 2 m £ 250 4m x 3 m	
Decking	£25 per square metre	
Children's play area	Swing is £95 See saw is £120 Climbing frame is £300	
Bird table	£38 each (size =1m square)	
Bench	£115 each 2m x 0.5 m	



Your budget for this project is £2000 – How close to £2000 can you get?

You must show your expenses with appropriate working out as you go along, plus your final total.

Example: Grass – Work out how many square metres you need.

$$4\text{m} \times 6\text{m} = 24\text{m}^2$$

$$24\text{m}^2 = 24 \times \text{£}1.50$$

$$= 24 \times 1.50 = \text{£}36$$

Good Luck!